

Greenleaf Centre

67-69 Greenleaf Road

Walthamstow, E17 6QP

Tel: 0208 509 3128

Email: admin@ecccaog.org

Website: www.ecci.org

Greenleaf

Hire Information



Emmanuel
COMMUNITY CHURCH INT.

Greenleaf is a centre for community development owned by Emmanuel Community Church Int.

Registered Charity No: 1188984

Greenleaf

Greenleaf is an ideal venue for small meetings, training seminars, conferences, parties or perfect for large events of up to 100 people.

There are a range of rooms available to suit all purposes.

MAIN HALL capacity: maximum 100

BOARD ROOM capacity: 22 seated

MEETING ROOM capacity: 12 seated

Hire charges: per hour

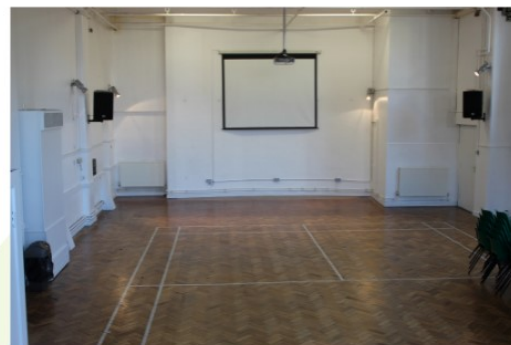
	Main Hall	Board Room	Meeting Room
Weekdays	£40	£30	£20
Evenings/ Weekends	£50	£40	£30

Hire charges: per 1/2 day: 9.00am-1.00pm / 1.00pm-5.00pm

	Main Hall	Board Room	Meeting Room
Weekdays	£180	£140	£100

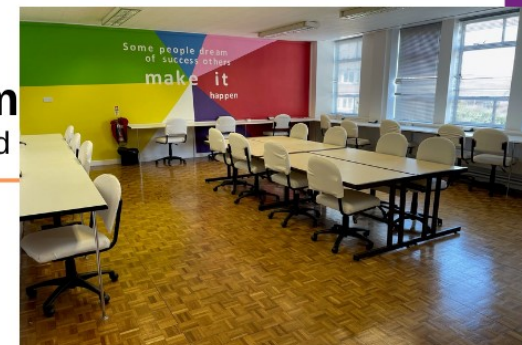
Hire charges: per day 9.00am-5.00pm

	Main Hall	Board Room	Meeting Room
Weekdays	£350	£300	£220



Main Hall
maximum 100

Board Room
22 seated



Meeting Room
12 seated

Kitchen & Cafe



Additional equipment available to hire:

Portable PA and microphones - £35

Projector - £35

Kitchen - £55 (per hire)